



# Chambers Creek Canyon Trail Development

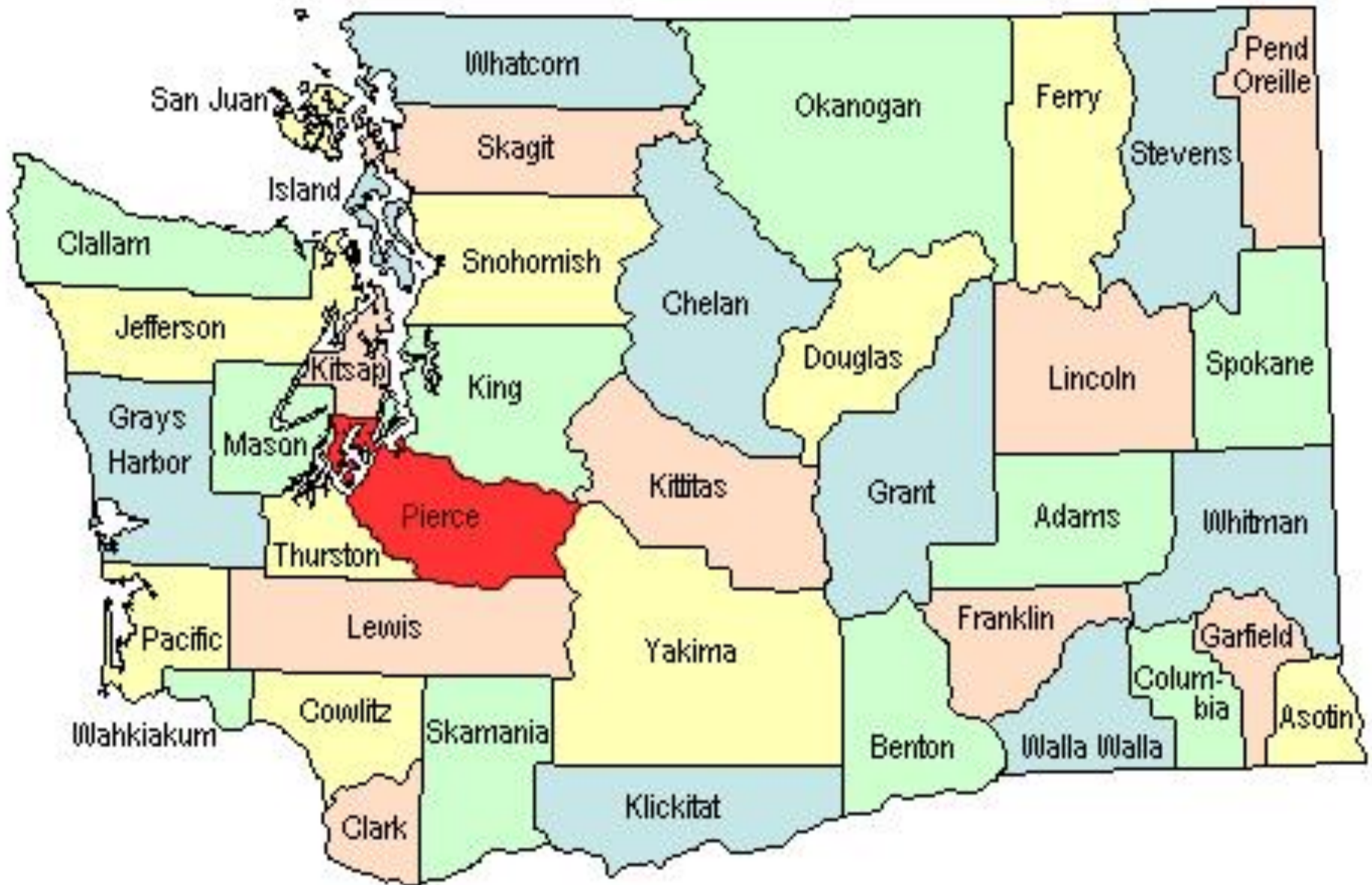
Project No. 18-1267    May 2018



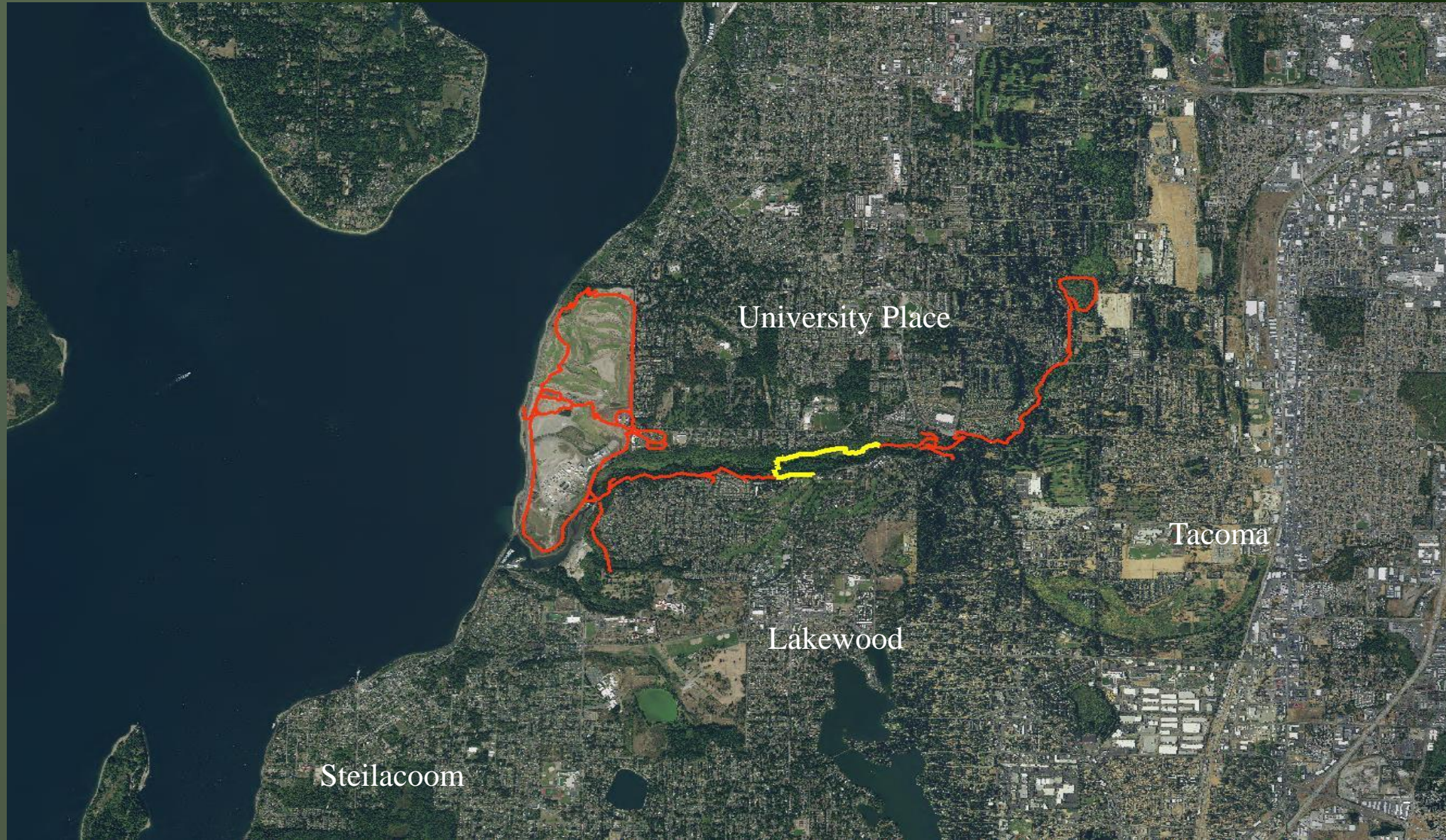
University Place  
WASHINGTON



# Regional Location



# Site Location



**What is our mission...**

**Create a back country trail experience within an highly populated urban area.**



**How....**

**By constructing phase two of the 2.5 mile Chambers Creek Trail within the Chambers Creek Canyon**





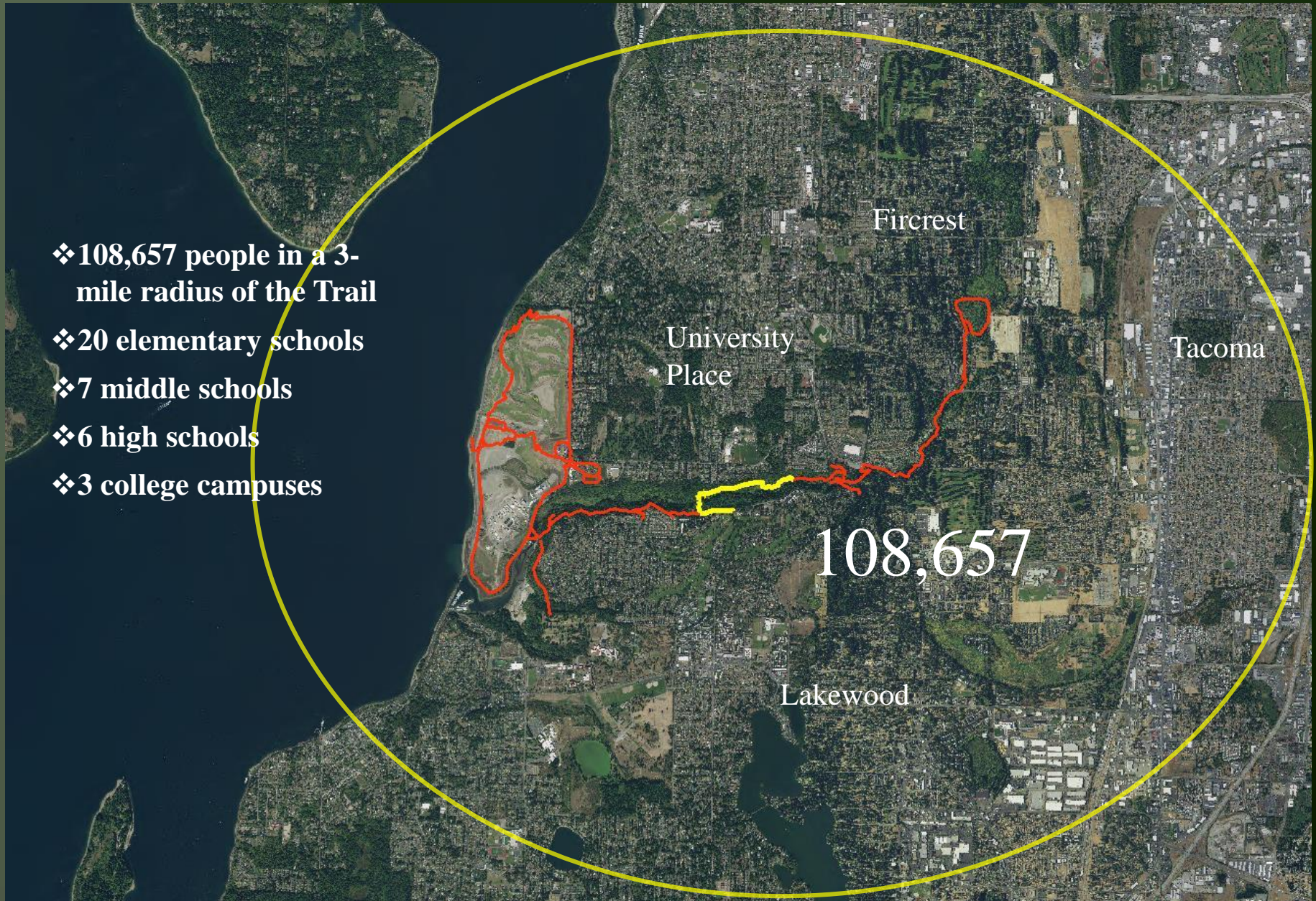






# 1- Need

- ❖ 108,657 people in a 3-mile radius of the Trail
- ❖ 20 elementary schools
- ❖ 7 middle schools
- ❖ 6 high schools
- ❖ 3 college campuses



## Chambers Creek Trail Project



### STATE AVERAGES

Median Income

People of Color

Disabled Pop.

BMI %

Mortality per 100,000

\$61,062

30%

13%

23%

692



# 1- Need



**More time spent in Parks and green spaces can benefit mental health, depression, anxiety and stress**

# 1- Need



# 1- Need

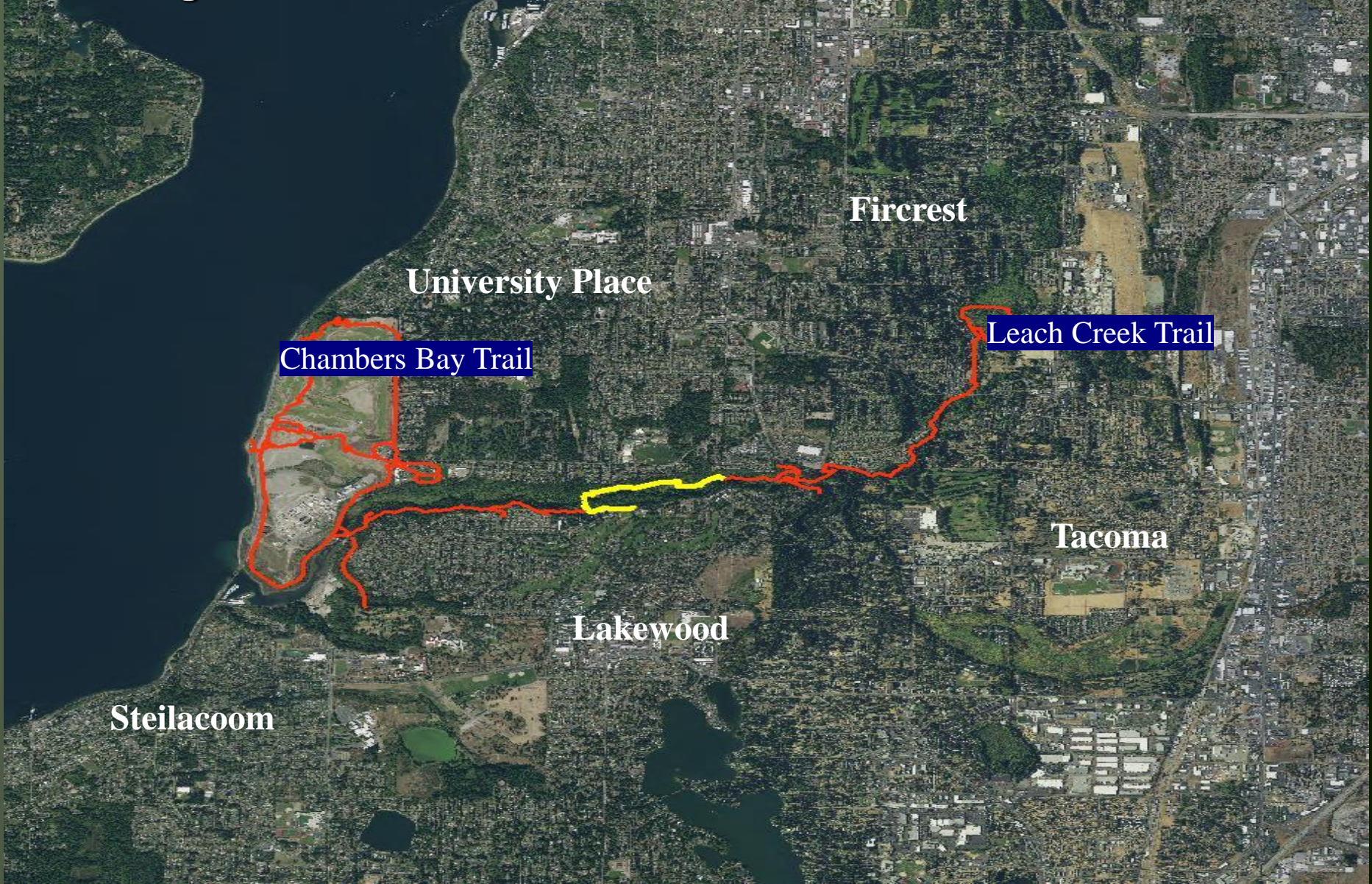


# 1- Need



25 11:53AM

# 2 - Linkage Between Trails



Chambers Bay Trail

Leach Creek Trail

Fircrest

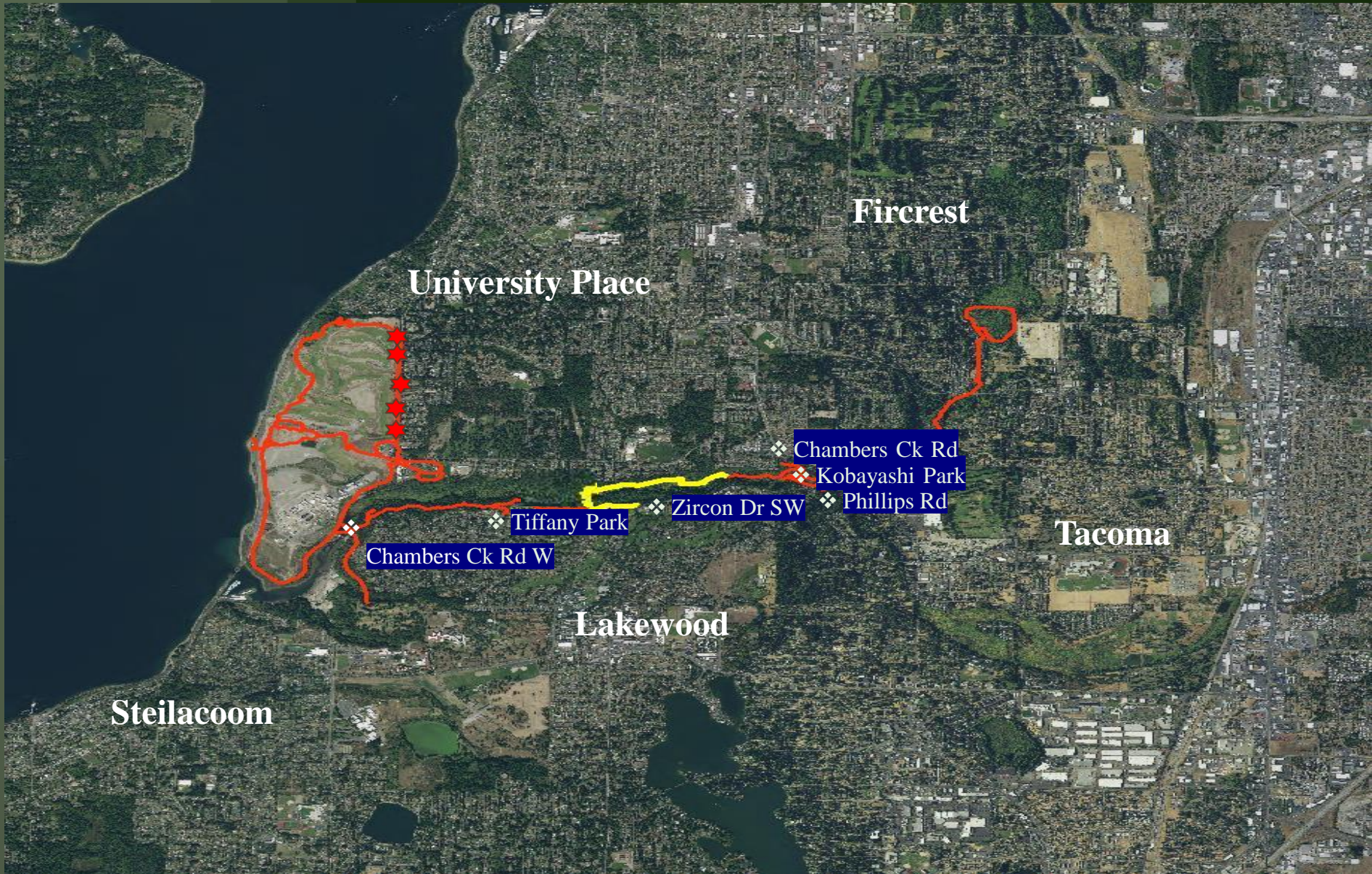
University Place

Tacoma

Lakewood

Steilacoom

### 3 - Linkage Between Communities



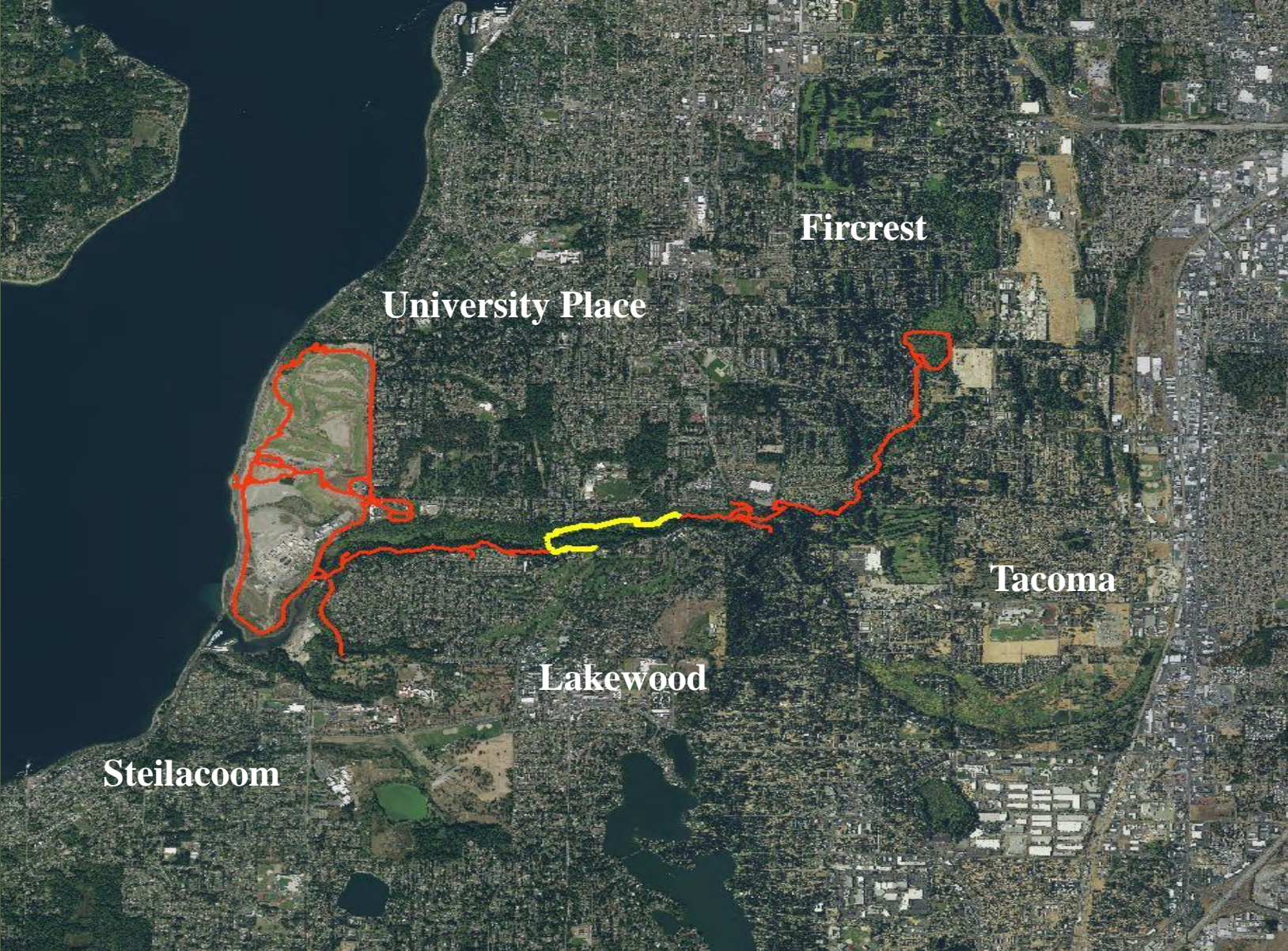


## 5- Project Design

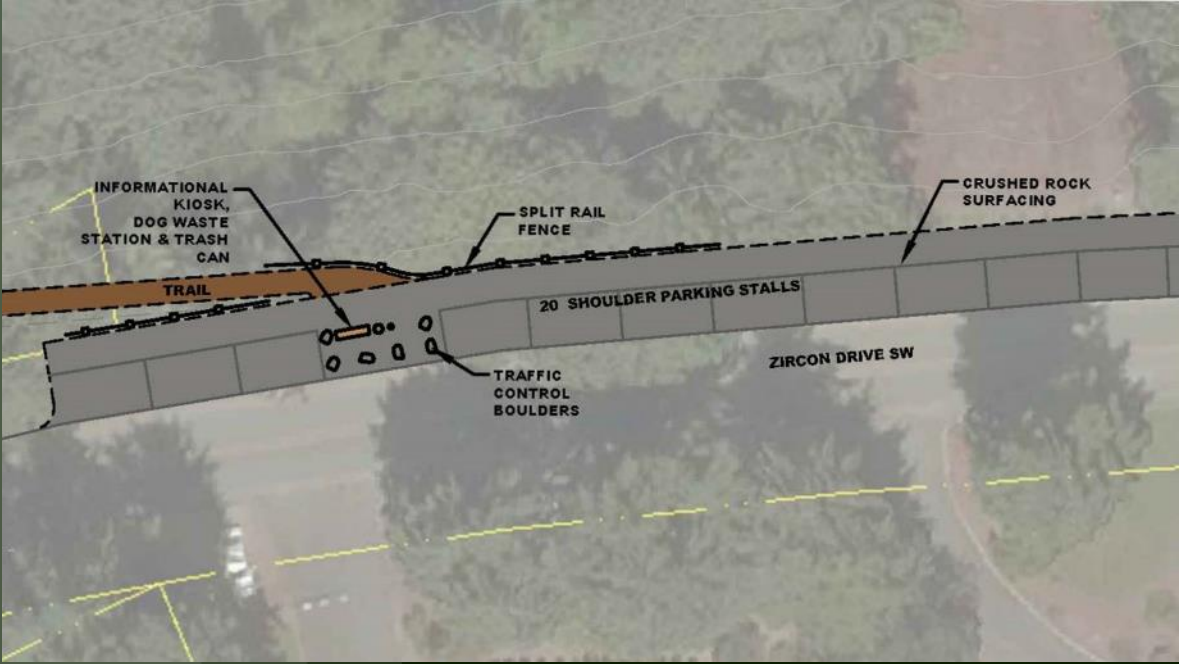


- ❖ 4,300ft of soft surface trail
- ❖ 1,970ft of boardwalks
- ❖ Suspension Bridge across Chambers Creek
- ❖ Trailhead with parking
- ❖ Interpretive signage
- ❖ ADA accessible areas and canyon viewing area at Zircon Trailhead
- ❖ Trail Length 1.2 miles

# 5 - Project Design



# 5- Project Design



# 5 - Project Design



# 5 - Project Design



## 5 - Project Design

### Suspension Bridge Example



# 5 - Project Design

## Informational Signage Examples



Eagle Scouts have requested to construct/ donate the Zircon Drive Kiosk

## 5- Project design 4,300' Soft Surface Trail





## 5 - Project Design



## 5 - Project Design

1,970' of  
Boardwalk



# 6 Sustainability and Environmental Stewardship



## 6- Sustainability and Environmental Stewardship



## 6- Sustainability and Environmental Stewardship

Old Logging  
road culvert



## 6- Sustainability and Environmental Stewardship



## 6- Sustainability and Environmental Stewardship



## 6- Sustainability and Environmental Stewardship





# 6- Sustainability and Environmental Stewardship



## 6- Sustainability and Environmental Stewardship



## 7 – Water Access or Views



## 7 – Water Access or Views



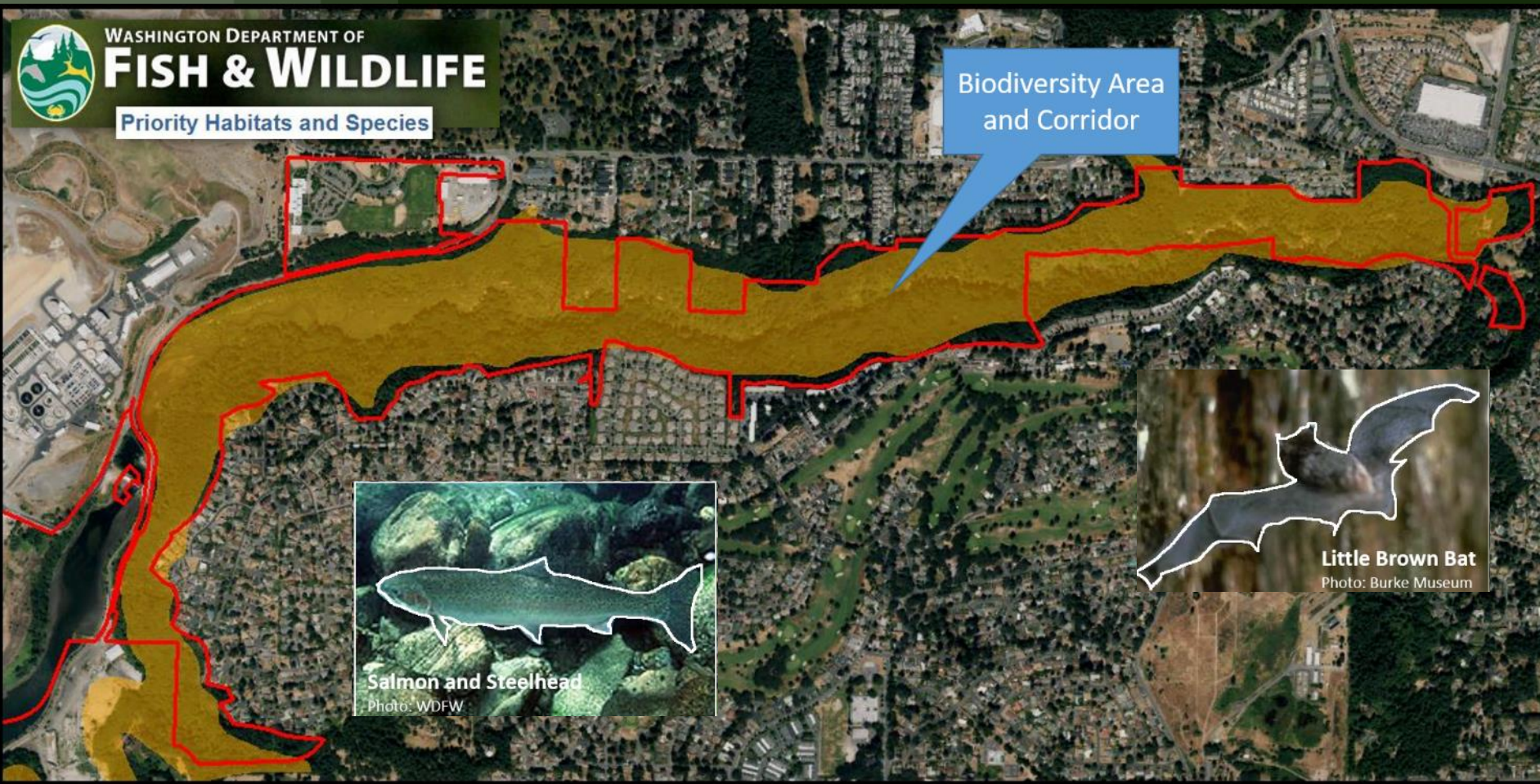
## 8 – Scenic Values



## 8 – Scenic Values



# 9- Enhancement of Wildlife



WASHINGTON DEPARTMENT OF  
**FISH & WILDLIFE**  
Priority Habitats and Species

Biodiversity Area  
and Corridor

Salmon and Steelhead  
Photo: WDFW

Little Brown Bat  
Photo: Burke Museum

## 9- Enhancement of Wildlife





## 9- Enhancement of Wildlife



## 9- Enhancement of Wildlife



## 9- Enhancement of Wildlife



## 10 – Project Support

- **Pierce County Council**
- **City of University Place Council**
- **City of Lakewood Council**
- **University Place Parks Commission**
- **Lakewood Parks Advisory Board**
- **Chambers Creek Foundation**
- **ForeverGreen Trails**
- **Washington Trails Association**
- **Foothill Trails Association**
- **Puget Sound Fly Fishers**
- **Partners for Parks**
- **Coastal Cutthroat Coalition**

## 11 – Cost Efficiencies

\$10,000 Contribution from Chambers Creek Foundation

\$2,000 Contribution from Foothills Trail Association

\$5,000 Lakewood Partners for Parks

1,000 hours Washington Trails Association Volunteer Labor



## 13 – Population Proximity



## 13 – Population Proximity

